










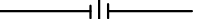
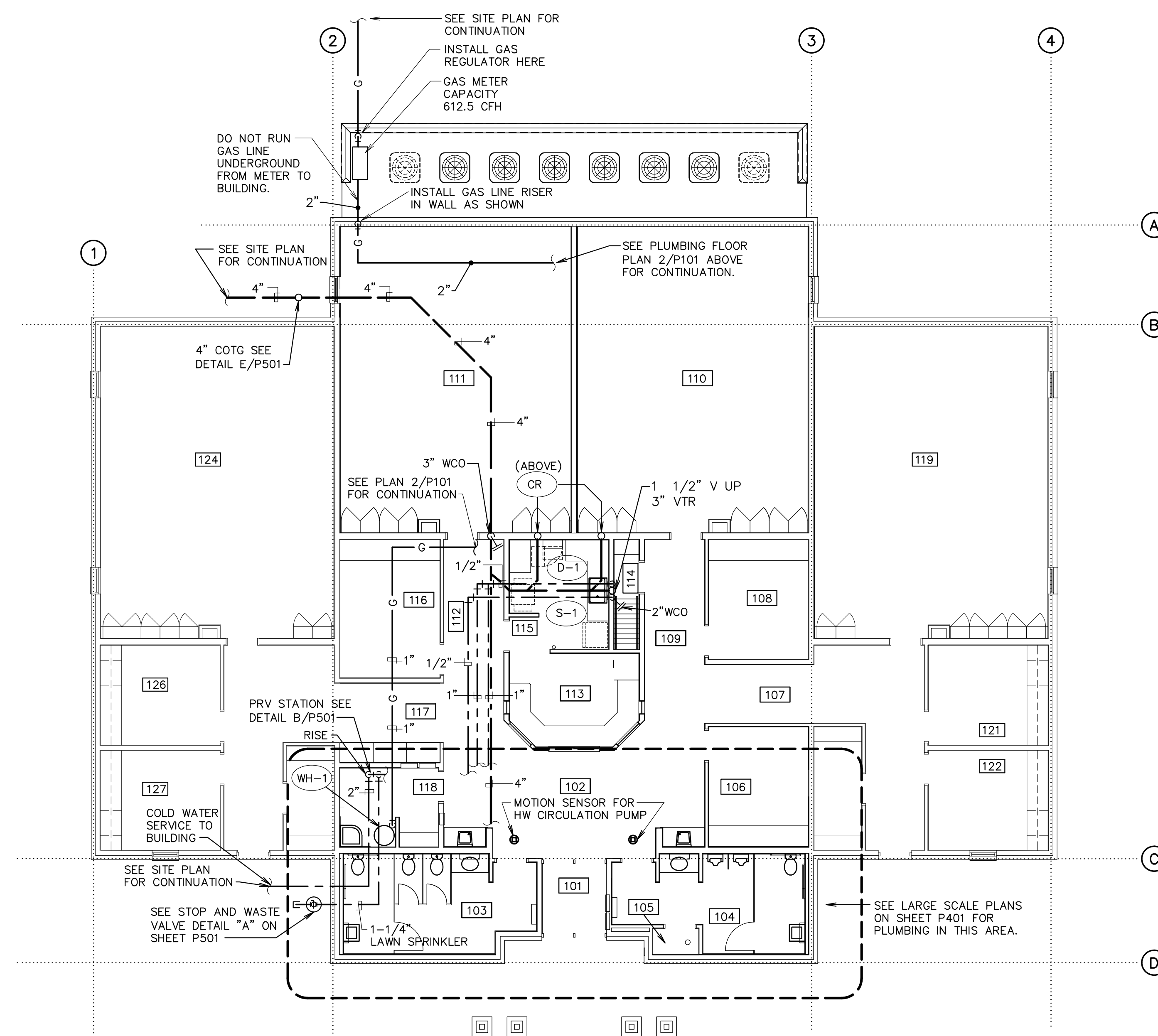


- ## NOTES

- 1- ALL PLUMBING SHALL COMPLY WITH THE MOST STRINGENT OF APPLICABLE CODES, ORDINANCES, OR THE SPECIFICATIONS.
- 2- ALL FIXTURES SHALL BE PROPERLY VENTED TO THE ATMOSPHERE.
- 3- REFER TO MECHANICAL SHEETS FOR LOCATIONS OF MECHANICAL EQUIPMENT AND DUCTWORK AND CORRELATE ALL WORK TO FIT AVAILABLE SPACE.
- 4- GAS LINES TO BE RUN IN CEILING SPACE UNLESS OTHERWISE NOTED OR SHOWN.
- 5- WATER PIPING AND VENT PIPING SHALL BE RUN IN CEILING SPACE BELOW BUILDING INSULATION UNLESS OTHERWISE NOTED OR SHOWN.
- 6- FOR INDIVIDUAL LINE SIZES TO FIXTURES SEE PLUMBING FIXTURE SCHEDULE ON SHEET P401
- 7- DO NOT RUN PLUMBING IN SHEAR WALLS.
- 8- MINIMUM WATER PIPING UNDER CONC. SLAB SHALL BE 3/4".
- 9- DUE TO THE CLOSE PROXIMITY OF THE WATER, VENT AND DRAIN PIPING AS WELL AS DUCTWORK, THE PLUMBING CONTRACTOR SHALL COORDINATE THE INSTALLATION WITH THE MECHANICAL AND SHEET METAL CONTRACTORS.
- 10- FOR PIPE SIZES NOT SHOWN ON THIS SHEET, SEE SHEET P401 AND P901.
- 11- PROVIDE 6" LONG DIRT LEG WITH CAP AT EACH GAS LINE DROP TO FURNACE AND WATER HEATER. SEE DETAIL J/P501.

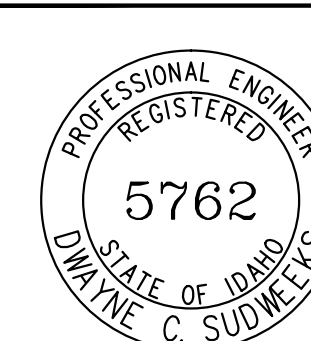
② EQUIPMENT PLATFORM PLAN

L E G E N D			
SYMBOL OR ABBREVIATION	M E A N I N G	SYMBOL OR ABBREVIATION	M E A N I N G
HOT WATER LINE		CONDENSATE DRAIN	
TEMPERED HOT WATER LINE		WALL CLEANOUT	WCO
HOT WATER CIRCULATING LINE		CLEANOUT	CO
CIRCULATING PUMP OCCUPANCY SENSOR		CLEANOUT TO GRADE	COTG
COLD WATER LINE		FLOOR CLEANOUT	FCO
VENT LINE		BALL VALVE	
WASTE LINE		UNION	
GAS LINE		SECONDARY CONDENSATE DRAIN	
VENT THRU ROOF	VTR		



1 MAIN FLOOR PLUMBING PLAN
1/8" = 1'-0"

ORIGINAL DRAWING SIGNED BY: DWAYNE C. SUDWEEKS
DATE ORIGINAL SIGNED: Nov 29, 2017
ORIGINAL ON FILE AT ENGINEERED SYSTEMS ASSOCIATES
1355 EAST CENTER, POCATELLO, IDAHO 83201



Engineered Systems Associates

— A Division of —

— A Division of —

— A Division of —

— A Division of —

— A Division of —

— A Division of —

— A Division of —

— A Division of —

— A Division of —

— A Division of —

— A Division of —

— A Division of —

— A Division of —

— A Division of —

— A Division of —

— A Division of —

— A Division of —

— A Division of —

— A Division of —

— A Division of —

— A Division of —

— A Division of —

— A Division of —

— A Division of —

— A Division of —

— A Division of —

— A Division of —

1355 EAST CENTER

POCATELLO, IDAHO 83201

PHONE: (208) 233-0501

FAX: (208) 233-0529

EMAIL: esa@engsystems.com

ESA JOB NUMBER: 17011

nbw architects p.a.
ARCHITECTURE / PLANNING / INTERIORS
SCOTT-NIELSON ALA, KEVIN R. DODLY ALA, JAMES H. WYATT ALA.
290 JOHN JORDAN PARKWAY, P.O. BOX 2212 - DUNEDIN FLAUS, DUNEDIN 33402-2212
(P) 206-522-8779, (F) 206-522-8785 (00) www.nbwarchitects.com

tamp:

New Building for:
Thunder Ridge Sr. Seminary
S&I
Project
Address

Project for:

THE CHURCH OF
JESUS CHRIST
OF LATTER-DAY SAINTS

[illegible]

Project Number:
6059

Plan Series:
EM07-04-10

Property Number:

Sheet Title:
**PLUMBING
FLOOR PLANS
AND LEGEND**

Sheet:

P101